



# WAREHOUSE BUILDING FOR SALE

206 S. Catalpa Street, Garnett, Kansas



## SALE PRICE: \$425,000 | 10,800 SF BUILDING

### DEMOGRAPHICS

	1 mile	3 miles	5 miles
Estimated Population	1,229	3,619	4,099
Avg. Household Income	\$55,616	\$70,714	\$74,274

- Highway access
- Two drive-in doors
- Finished office space inside
- Loading dock
- Three Phase power



CLICK HERE TO VIEW MORE  
LISTING INFORMATION

For More Information Contact:

CAMREN SINCLAIR | 816.412.7352 | [csinclair@blockandco.com](mailto:csinclair@blockandco.com)

GREG ROBERTS | 816.412.7384 | [groberts@blockandco.com](mailto:groberts@blockandco.com)

Exclusive Agents

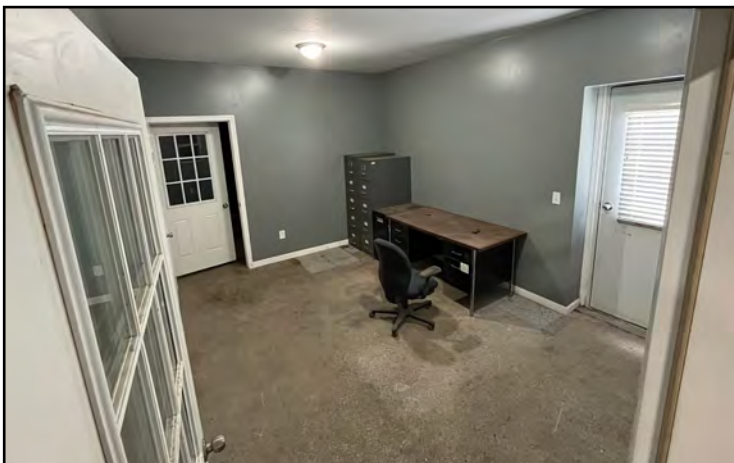




# WAREHOUSE BUILDING FOR SALE

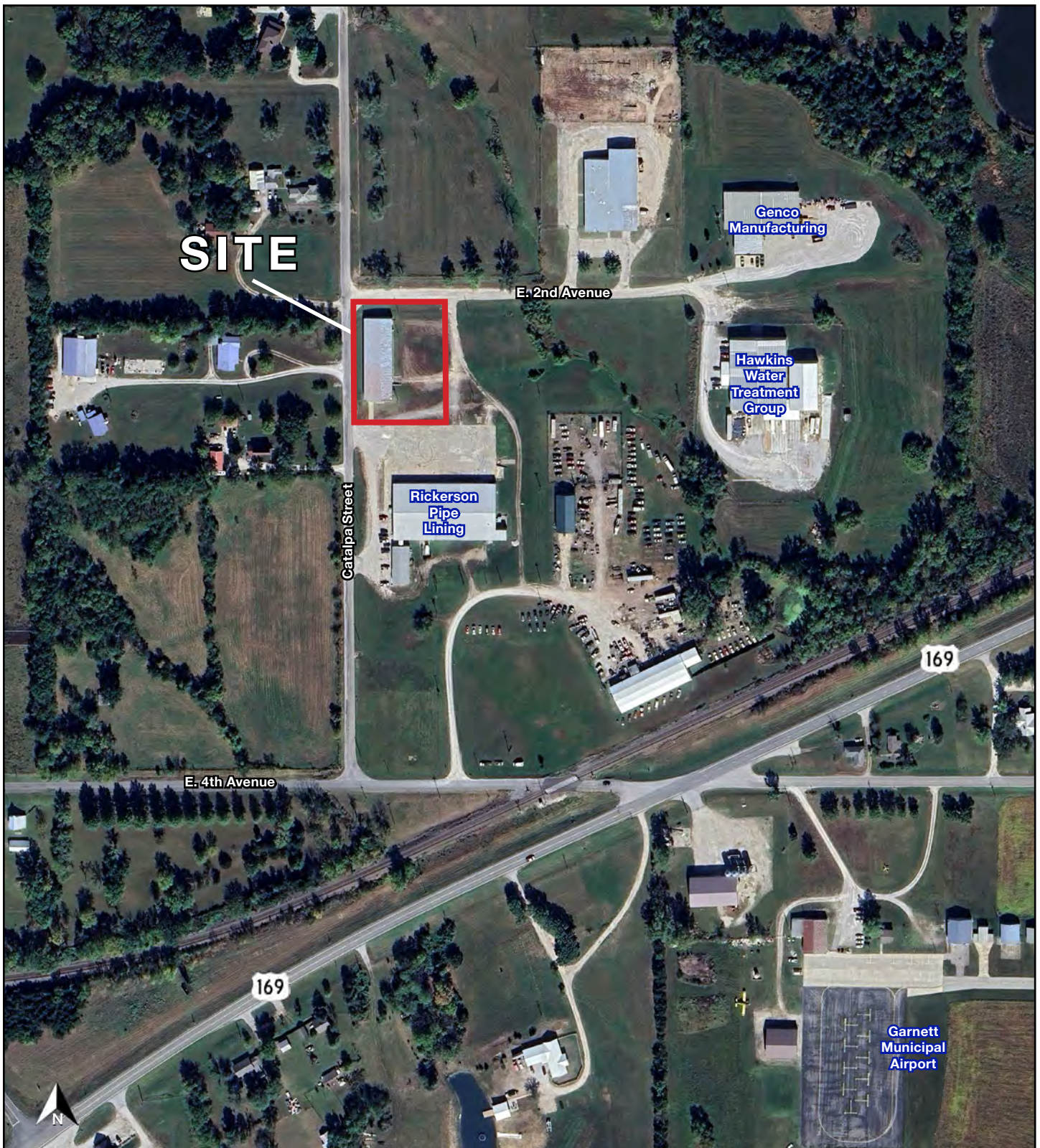
206 S. Catalpa Street, Garnett, Kansas

## PHOTOS





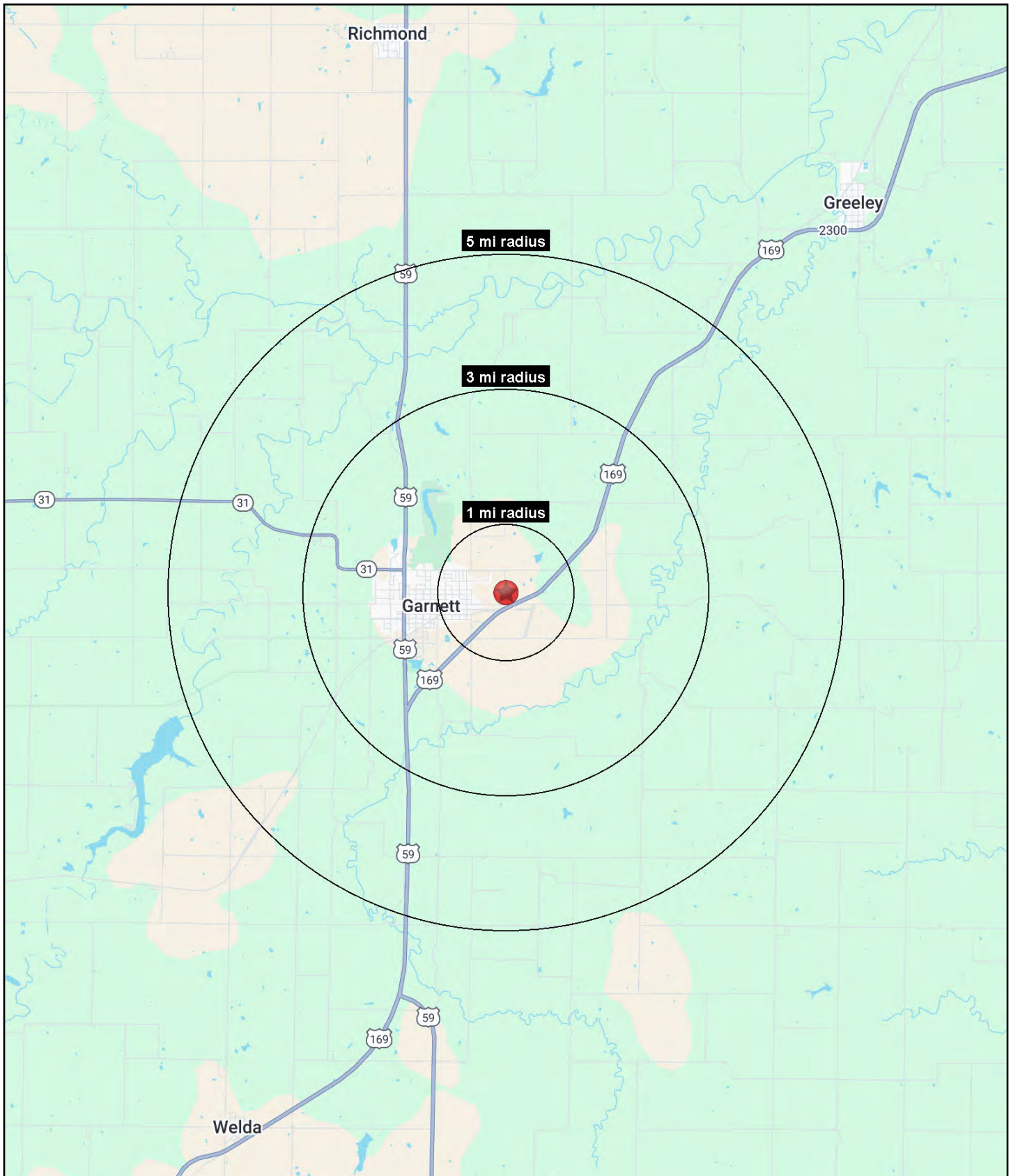
## PHOTOS





# WAREHOUSE BUILDING FOR SALE

206 S. Catalpa Street, Garnett, Kansas





# WAREHOUSE BUILDING FOR SALE

## 206 S. Catalpa Street, Garnett, Kansas

206 S. Catalpa Street Garnett, KS 66032	1 mi radius	3 mi radius	5 mi radius
<b>Population</b>			
2025 Estimated Population	1,229	3,619	4,099
2030 Projected Population	1,285	3,785	4,288
2020 Census Population	1,246	3,683	4,174
2010 Census Population	1,304	3,842	4,332
Projected Annual Growth 2025 to 2030	0.9%	0.9%	0.9%
Historical Annual Growth 2010 to 2025	-0.4%	-0.4%	-0.4%
2025 Median Age	38.2	37.9	38.4
<b>Households</b>			
2025 Estimated Households	528	1,492	1,676
2030 Projected Households	547	1,544	1,734
2020 Census Households	532	1,522	1,716
2010 Census Households	549	1,579	1,775
Projected Annual Growth 2025 to 2030	0.7%	0.7%	0.7%
Historical Annual Growth 2010 to 2025	-0.3%	-0.4%	-0.4%
<b>Race and Ethnicity</b>			
2025 Estimated White	93.9%	92.9%	93.2%
2025 Estimated Black or African American	1.0%	1.0%	1.0%
2025 Estimated Asian or Pacific Islander	0.4%	0.9%	0.9%
2025 Estimated American Indian or Native Alaskan	0.6%	0.5%	0.5%
2025 Estimated Other Races	4.1%	4.6%	4.4%
2025 Estimated Hispanic	4.1%	3.6%	3.5%
<b>Income</b>			
2025 Estimated Average Household Income	\$55,616	\$70,714	\$74,274
2025 Estimated Median Household Income	\$34,235	\$56,373	\$59,310
2025 Estimated Per Capita Income	\$24,293	\$29,479	\$30,660
<b>Education (Age 25+)</b>			
2025 Estimated Elementary (Grade Level 0 to 8)	4.2%	4.8%	5.8%
2025 Estimated Some High School (Grade Level 9 to 11)	2.7%	3.3%	3.2%
2025 Estimated High School Graduate	47.2%	44.8%	43.3%
2025 Estimated Some College	25.0%	23.5%	22.8%
2025 Estimated Associates Degree Only	9.0%	9.1%	9.7%
2025 Estimated Bachelors Degree Only	4.0%	5.2%	6.1%
2025 Estimated Graduate Degree	8.0%	9.2%	9.2%
<b>Business</b>			
2025 Estimated Total Businesses	20	184	192
2025 Estimated Total Employees	166	1,581	1,633
2025 Estimated Employee Population per Business	8.3	8.6	8.5
2025 Estimated Residential Population per Business	61.8	19.7	21.4

©2025, Sites USA, Chandler, Arizona, 480-491-1112 Demographic Source: Applied Geographic Solutions 5/2025, TIGER Geography - RS1